



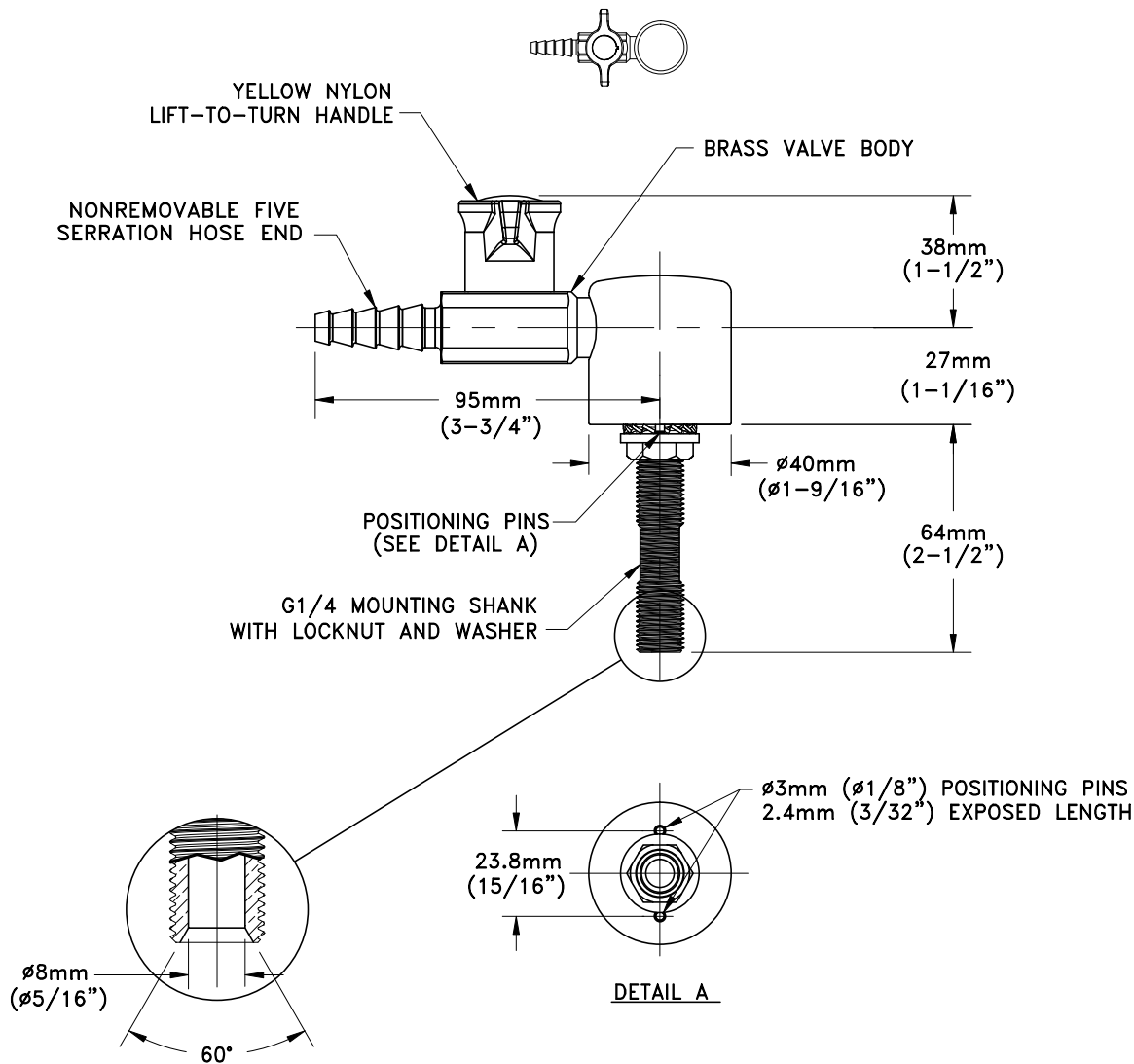
WaterSaver | ColorTech BT

WaterSaver Faucet  
701 W Erie St  
Chicago, IL 60654

312 666 5500 TELEPHONE  
312 666 5501 FACSIMILE  
wsflab.com

BT2930-1BM

LABORATORY LIFT/TURN GAS VALVE FITTING, DECK MOUNTED SINGLE



**NOTES:**

1. HANDLE LOCKS IN CLOSED POSITION. LIFT HANDLE TO UNLOCK AND OPEN VALVE.
2. FITTING IS FACTORY ASSEMBLED AND TESTED AT 8 BAR (125 PSI). MAXIMUM WORKING PRESSURE IS 5 BAR (75 PSI).
3. SPECIFY IF CLEANING FOR OXYGEN AND HIGH PURITY GASES IS REQUIRED.
4. FITTING HAS COLORTECH EPOXY POWDER COATED FINISH. SPECIFY COLOR (WHITE, GRAY OR TAN) WHEN ORDERING.

MEASUREMENTS MAY VARY  $\pm 1/4"$  (6mm).

Drawing Number: \_\_\_\_\_

Revision Number: 021624-KJS